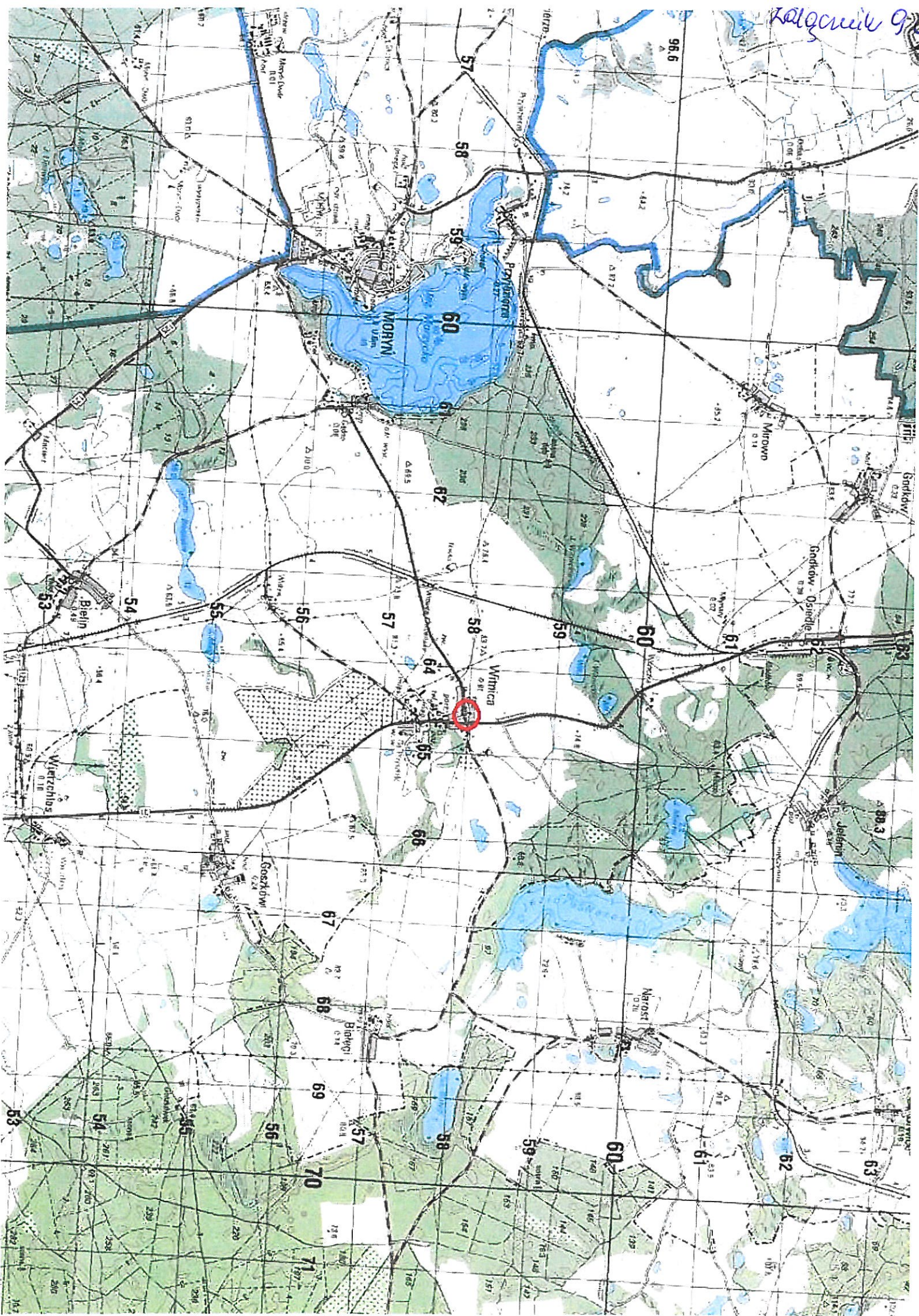
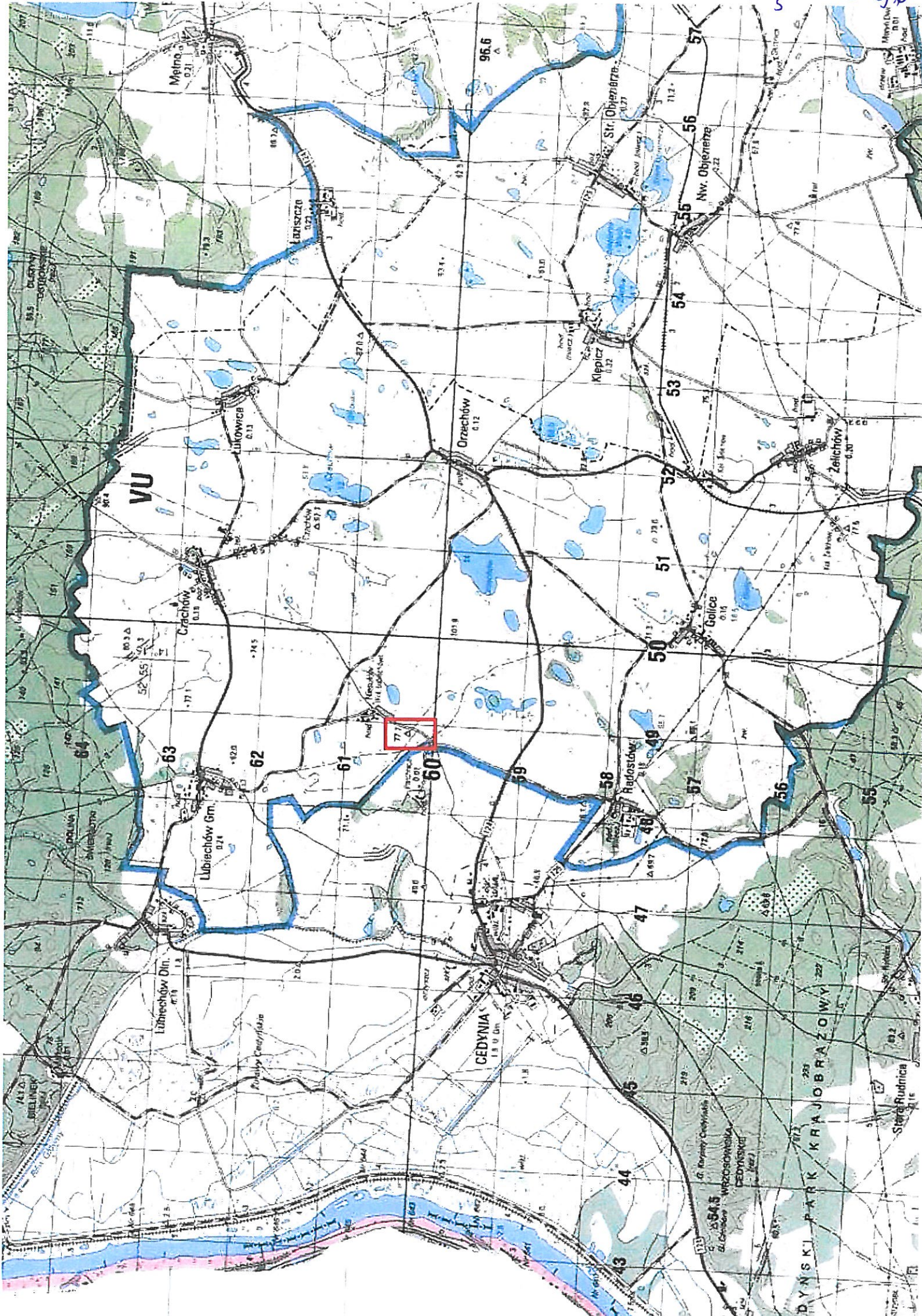


Latgale 9a





rysunek 9b





This is a detailed topographic map of the Białystok region in Poland. The map features a grid system with numbers 42 through 70 along the top and 50 through 59 along the left side. The Białystok River is shown flowing through the lower right portion of the map. Key locations marked include Mieszkowice, Kurzycko, Czelin, and Str. Białystok. A red rectangle highlights a specific area near Kurzycko. The map includes contour lines, roads, and various place names such as Kamionka, Plany, and Kłosów. The terrain is depicted with green shading and contour lines indicating elevation.